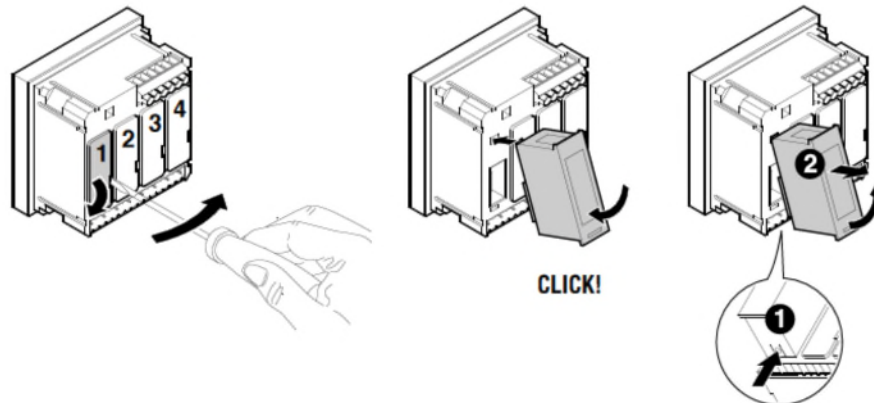
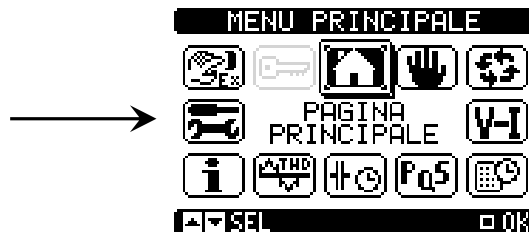


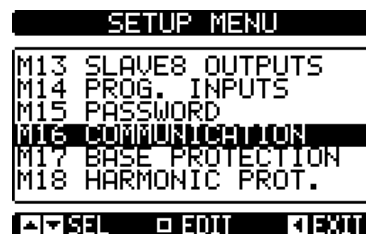
1. Installare il modulo di comunicazione WEB ETH in uno degli slot disponibili (vedere figura):



2. Collegare il cavo LAN cat.5 al modulo di espansione WEB ETH.
3. Accendere il regolatore di potenza reattiva e andare nel menù principale e selezionare il menù IMPOSTAZIONI:



4. Selezionare il menu M16 COMUNICAZIONE:



5. Selezionare il parametro P16.01 COM01:

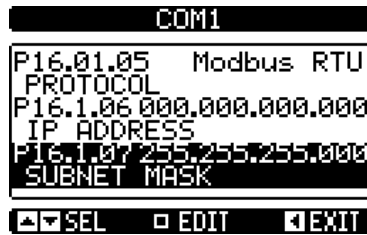


**ATTENZIONE:** se nel regolatore è installato il modulo di espansione COM 485, selezionare il parametro P16.02 COM02.

6. Selezionare il parametro P16.01.06 "INDIRIZZO IP" e impostare il valore corretto (fare riferimento all'amministratore di rete per il parametro)



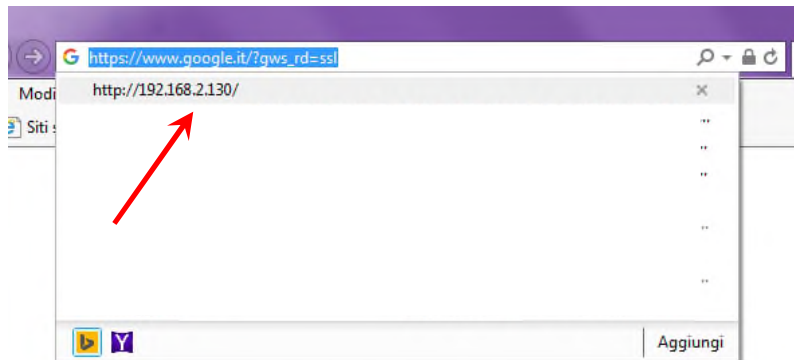
- 7. Selezionare P16.01.07 "SUBNET MASK" e impostare il valore corretto (fare riferimento all'amministratore di rete per il parametro)



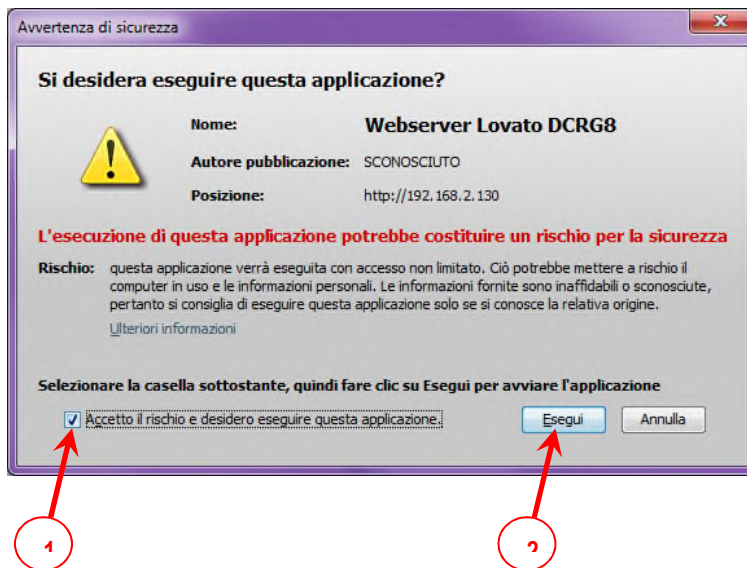
- 8. Select P16.1.13 "INDIRIZZO IP GATEWAY" e impostare il valore corretto (fare riferimento all'amministratore di rete per il parametro se il GATEWAY è disponibile)



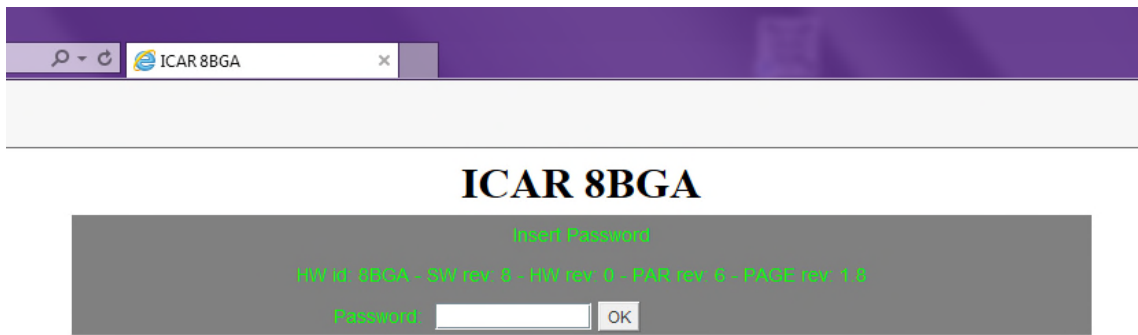
- 9. Aprire il browser ed inserire l'INDIRIZZO IP impostato nel parametro P16.1.06:



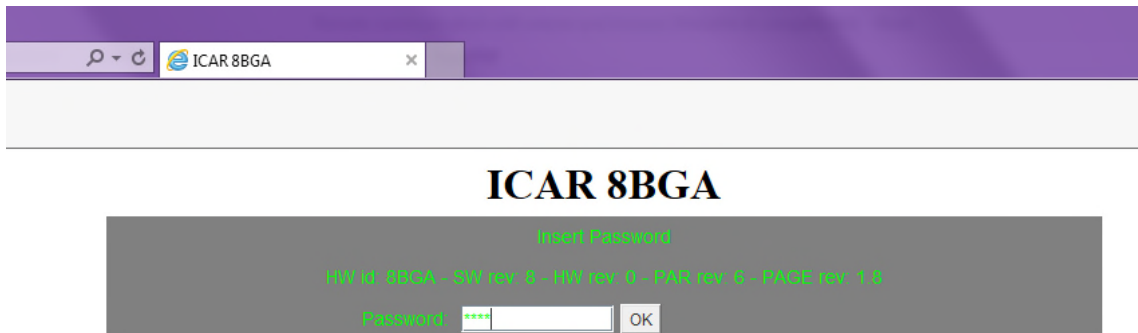
- 10. Apparirà il seguente messaggio di sicurezza. Cliccare sul punto 1 e successivamente confermare cliccando sul punto 2:



11. Apparirà la seguente schermata.



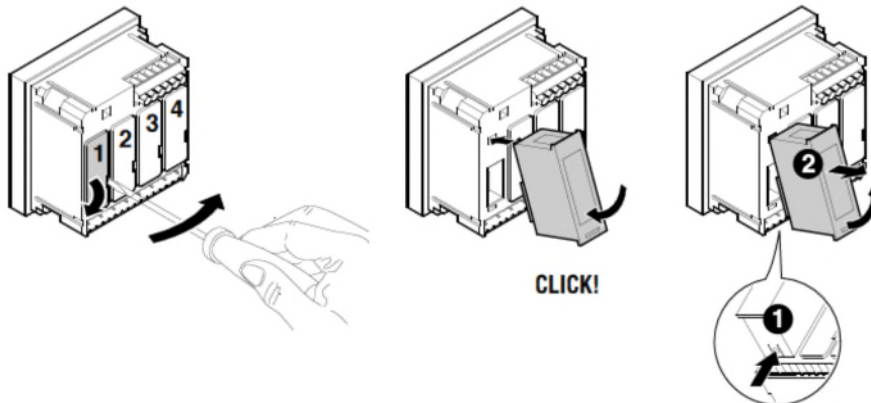
12. Inserire la password utente «1000» e cliccare su OK:



13. Apparirà la schermata seguente:



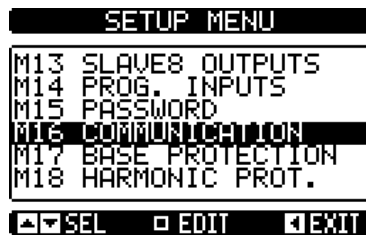
1. Install the WEB ETH expansion module In the available slots (see picture):



2. Connect the cat.5 LAN cables to the WEB ETH expansion module.
3. Switch on the regulator, go on the main page and select the set-up menu:



4. Select M16 COMMUNICATION menu:

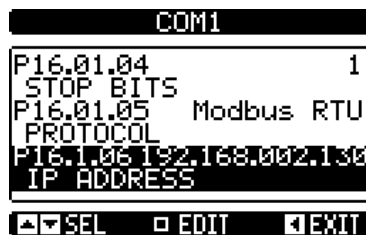


5. Select P16.01 COM01:

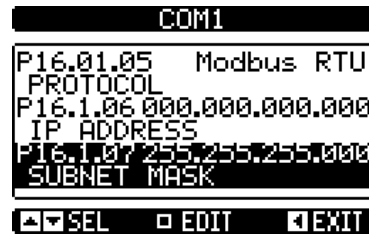


**WARNING: if the RS485 module is installed in the regulator, select the parameter P16.02 COM02.**

6. Select P16.01.06 "IP ADDRESS" and set correct value (refer to network administrator for the parameter)



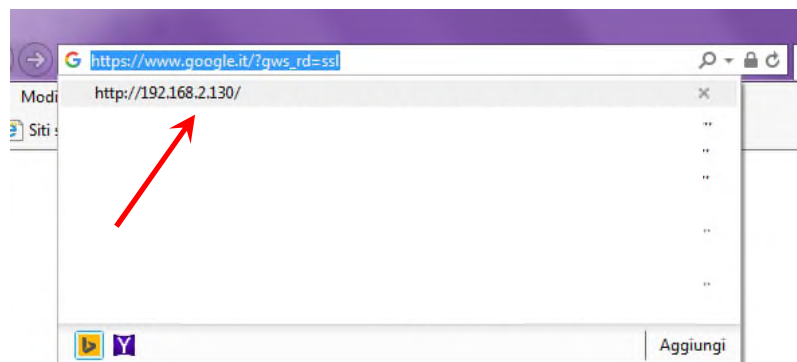
7. Select P16.01.07 "SUBNET MASK" and set correct value (refer to network administrator for the parameter)



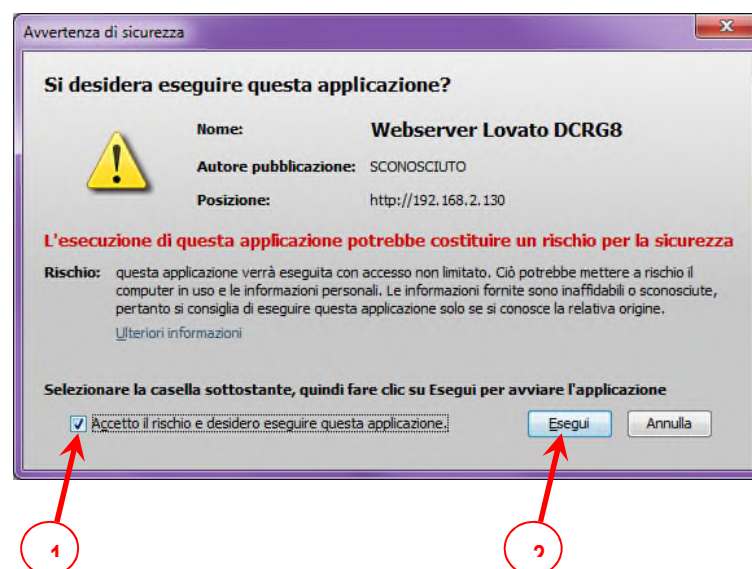
8. Select P16.1.13 "IP GATEWAY ADDRESS" and set correct value (refer to network administrator for the parameter if the GATEWAY is available)



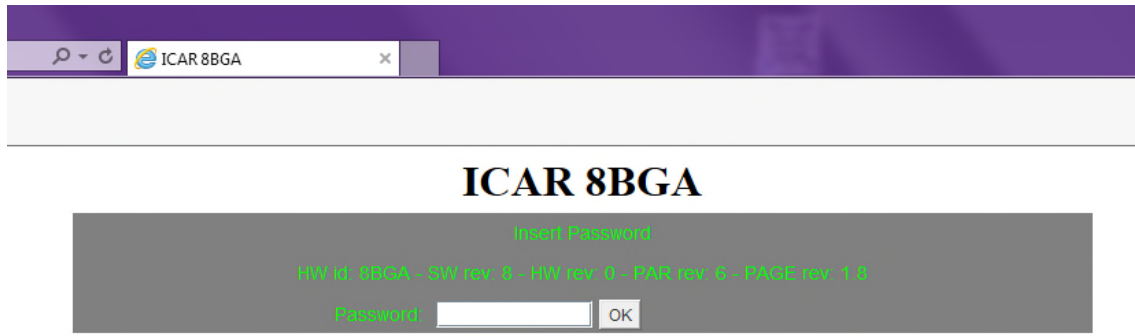
9. Open the browser and insert the IP ADDRESS set into the parameter P16.1.06:



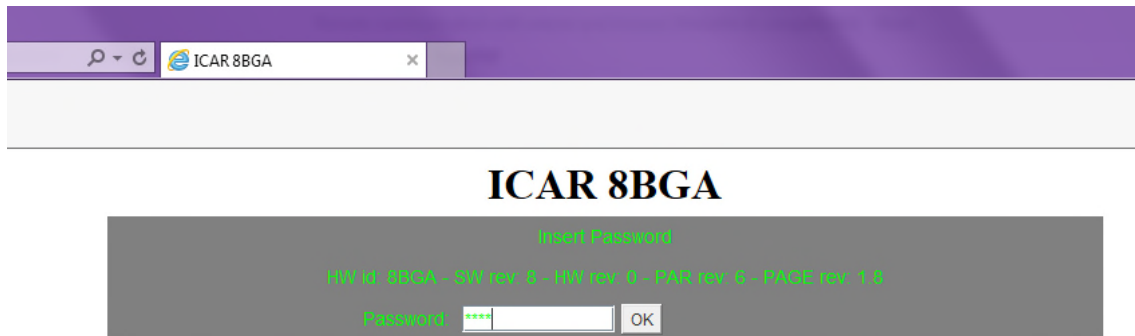
10. The following warning window appears. Click on the point 1 and after confirm (point 2):



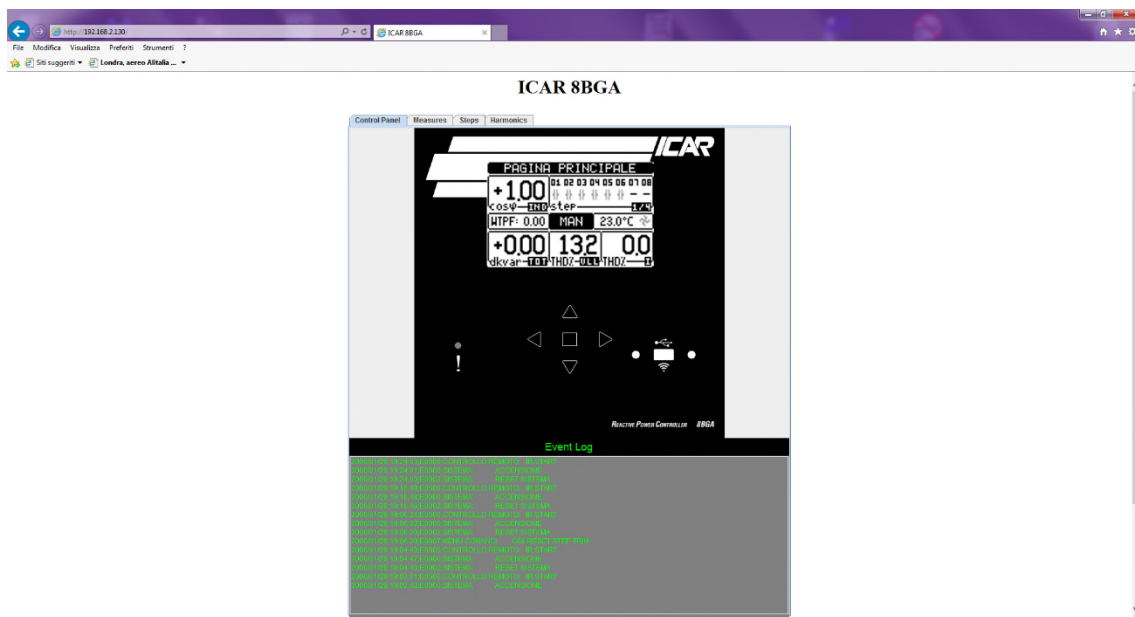
11. The following page appears:



12. Type in the user password "1000" and click on OK:



13. The following page appears:







ICAR by ORTEA NEXT

[www.next.ortea.com](http://www.next.ortea.com) – service: [tech.cv@icar.com](mailto:tech.cv@icar.com)



ORTEA SpA  
Via dei Chiosi, 21  
20873 Cavenago Brianza – Milan – ITALY  
Tel.: ++39 02 95917800